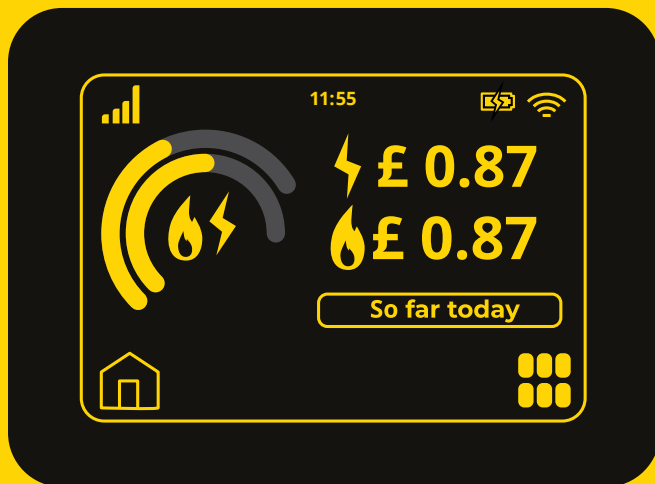


Using your In-Home Display

Chameleon Technology
Model IHD6-CAD-PPMID

boost





Meet your new In-Home Display (IHD) from Boost

It's the easiest way to keep an eye on your energy use, credit balance and top-ups, all in one place.

Don't forget – you'll need to call us to pair your IHD to your smart meter before you see your energy and balance info. Our contact details are in the letter that came with your IHD.

Important bits to keep in mind

Please read these safety tips carefully before using your IHD.

- Your IHD is for indoor use only.
- Please keep it away from moisture and liquids. If the display gets wet, unplug it, turn it off and dry it before turning it back on.
- Switch off your IHD before cleaning it.
- Avoid dropping, excessive shock or vibration.
- If there's a problem with your IHD, just let us know. Please don't try to repair it yourself.
- Please only use the power adapter supplied in the box.
- Your IHD isn't a toy, so please keep it out of reach of children.
- Please don't expose your IHD to heat, try to puncture it or throw it in a fire – it has a battery inside.
- At the end of its life, please take your IHD to a recycling centre.
- Your IHD is compliant with RoHS regulations.

Using your In-Home Display

In this guide

Quick Start Guide

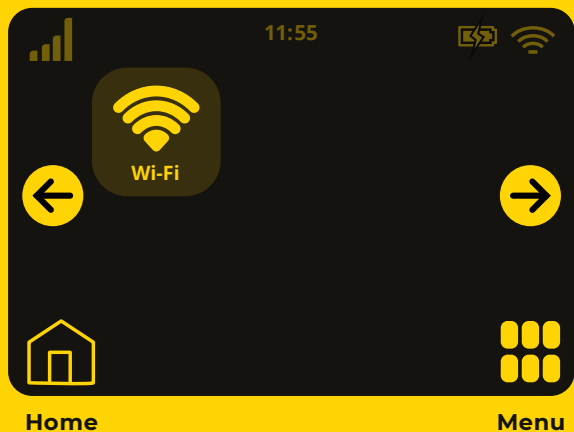
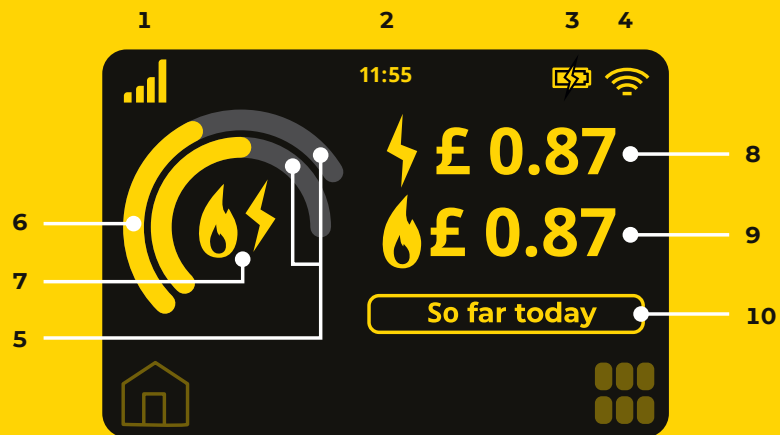
Your IHD screen and buttons	7
Checking your balance and low-credit alerts	8
Reconnecting your energy	8
Setting up an energy budget	9

Using your IHD to save energy	9
-------------------------------	---

Personalise your IHD	10
----------------------	----

Check your prices	11
-------------------	----

Connecting your IHD to Wifi	11
-----------------------------	----



Quick Start Guide

Your IHD screen and buttons



Screen

Here's what the icons mean.

- 1 Signal strength** – between your IHD and your smart meter
- 2 Current time**
- 3 Battery level** – also shows if your device is charging
- 4 Wifi signal strength** – if your IHD is connected to wifi
- 5 Energy use rings** – one for electricity, one for gas
- 6 Budget line** – shows your personally set budget
(see *Setting up an energy budget*)
- 7 Fuel type** – electricity, gas or both
- 8 Electricity numerical display** – your spend on electricity in pounds, pence and kWh
- 9 Gas numerical display** – your spend on gas in pounds, pence and kWh
- 10 Time period** – for the information you're seeing on the screen (day, week, month or year)

Home – press to go to the home screen, where you can see your energy use for today (see *Personalising your IHD*).

Menu – opens the menu where you can see and use all your IHD features

So far today – tap to change the time period for your energy use. The options are now, week, month or year. You can also see your credit balance.

Arrows – scroll through the menu with the left and right arrow

Wifi – press to connect your IHD to wifi (see *Connecting your IHD to Wifi*)

On the back of your IHD

On/Off button

Quick Start Guide

Checking your balance and low-credit alerts



Seeing how much credit you've got left is easy – it's shown right on your IHD home screen.

Low-credit warning

If your credit is running low, your IHD will alert you with a sound and show a low-credit symbol on its screen.

Your top-up history

You can see your last 5 top-ups on your IHD by pressing **MENU** then **PREVIOUS TOP-UPS**. Use the arrows to scroll through and press **OK** to finish.

Quick Start Guide

Reconnecting your energy



If your credit runs out (and you've already used your emergency credit), your energy might be disconnected. If that happens, the first thing to do is top-up in your usual way.

To reconnect your electricity on your IHD

Press the **MENU** button, then **ACTIVATE**, then **YES**. Next, press **CONTINUE** and your IHD will show a message to say your electricity is reconnected. Press **OK** to return to the home screen.

You'll need to reconnect your gas on your gas meter

[See our full instructions](#) on reconnecting your gas in just a few steps on your gas meter.

Quick Start Guide

Setting up an energy budget



If you've got a budget in mind for your energy use, your IHD can help you stick to it.

To set up individual budgets for electricity and gas, press **MENU** then **BUDGET**. Here, you can set up a daily, weekly, monthly or yearly budget for each.

Choose the fuel to budget for and press **CHANGE**. Next, choose a duration for your budget with the time period button and set your budget value with the arrow keys.

Once you've finished, press **SET** and **OK**. You'll now see a budget line on the home screen energy use rings – to help you track how much energy you've used against your budget.

Using your IHD to save energy



Ever wondered how much it costs to run your fridge? Or keep the TV on standby? Your IHD can reveal all, and help you save money by cutting unnecessary energy waste.

Seeing your live energy use

Simply tap **SO FAR TODAY** until you see **USAGE NOW**. This is how much energy your home is using right now.

Spotting wasted energy

Simply unplug your IHD (it has a rechargeable battery) and make a note of your live energy use before and after switching each appliance on and off. You won't need to keep them switched off for long. You might find you could save energy by switching your

TV off at the wall instead of leaving it on standby. Or that you could save energy by only boiling as much water as you need, rather than the whole kettle each time.

More energy-efficiency tips

For more advice, tips and tricks on cutting down wasted energy, check out our guides here:

boostpower.co.uk/help/topics/how-to-save-money

Personalise your IHD

From screen brightness to alerts and tones, your IHD can be set up the way you want it. Just press the **MENU** button, then **SETTINGS**.

Screen brightness – choose the level of brightness, then press **SET** to save the changes.

Home screen view options – to change the layout, press **HOME SCREEN**. Use the **LEFT** and **RIGHT** arrows to scroll through 4 different layout options. Once you've chosen one, press **SET** to save the settings.

Alerts and tones – on and off

Key tones – on and off

Budget alert tone – on and off

Low credit alert tone – on and off

Night mode – the screen of your IHD can dim during the night (from midnight to 7am). Press **ON/OFF** to toggle night mode.

Check your prices

You can see your energy unit prices and standing charges for electricity and gas on your IHD. To see this info, press **MENU**, then **ACCOUNT** and use the arrows to scroll through.

Connecting your IHD to Wifi

Optionally, you can connect your IHD to your Wifi at home. This will make it easier to keep your IHD software up to date. Don't want to connect to Wifi? You can still use all the features in this guide without it.

To connect, Press **MENU** then use the arrows to scroll through to **SETTINGS** and press **Wifi**, then follow the on-screen instructions.



boost